



Bobbie Holsclaw
Jefferson County Clerk's Office

As evidenced by the instrument number shown below, this document
has been recorded as a permanent record in the archives of the
Jefferson County Clerk's Office.



INST # 2016153901

BATCH # 30733

JEFFERSON CO, KY FEE \$20.00

PRESENTED ON: 06-30-2016 6 11:34:34 AM

LODGED BY: LITTLE SPRING FARM BUILDERS LLC

RECORDED: 06-30-2016 11:34:34 AM

BOBBIE HOLSCLAW

CLERK

BY: CARRIE HARRISON

RECORDING CLERK

BK: P 55

PG: 63-64

55x64

CERTIFICATE OF OWNERSHIP AND DEDICATION

This is to certify that the undersigned is the owner of the land shown on this plat and that the same is being dedicated to the public use...

LITTLE SPRING FARM, SECTION 3B
and does hereby dedicate to public use: VISTA CLUB DRIVE

LILLY GARDEN DRIVE, THIMBERLAND DRIVE, BRADEN PLACE
OWNERS: LITTLE SPRING FARM BUILDERS, LLC

CERTIFICATE OF ACKNOWLEDGMENT

STATE OF KENTUCKY, COUNTY OF WELLS

I, Tamele T. Tuda, being duly sworn, depose and say that the foregoing plat of Little Spring Farm Section 3B was this day presented to me by Joseph T. Sabak...

My Commission expires 9th September 2017

Approved by the Board of Civil Engineers

Approved by the Board of Planning Commissioners

Approved by the Board of Health Officers

Approved by the Board of Public Works

Approved by the Board of Public Safety

Approved by the Board of Public Health

Approved by the Board of Public Welfare

Approved by the Board of Public Education

Approved by the Board of Public Safety

Approved by the Board of Public Health

Approved by the Board of Public Welfare

Approved by the Board of Public Education

Approved by the Board of Public Safety

Approved by the Board of Public Health

Approved by the Board of Public Welfare

Approved by the Board of Public Education

Approved by the Board of Public Safety

Approved by the Board of Public Health

Approved by the Board of Public Welfare

Approved by the Board of Public Education

Approved by the Board of Public Safety

Approved by the Board of Public Health

Approved by the Board of Public Welfare

Approved by the Board of Public Education

Approved by the Board of Public Safety

Approved by the Board of Public Health

Approved by the Board of Public Welfare

Approved by the Board of Public Education

Approved by the Board of Public Safety

Approved by the Board of Public Health

Approved by the Board of Public Welfare

Approved by the Board of Public Education

Approved by the Board of Public Safety

Approved by the Board of Public Health

Approved by the Board of Public Welfare

NOTES

1) THERE SHALL BE NO SPUR RESERVATION OF THE LAND INTO A GREATER NUMBER OF LOTS THAN ORIGINALLY APPROVED...

2) DEED BOOK 10282, PAGE 751, DOCKET 141000000

3) THE DEPTH OF ALL ROADSIDE SHOULDER DRIVEWAYS SHALL BE... 2

4) ALL STREETS (AS SHOWN ON APPROVED CONSTRUCTION PLANS) SHALL BE MAINTAINED BY THE DEVELOPER...

5) THE LOTS SHOWN ON THIS PLAT SHALL BE LIMITED TO SINGLE-FAMILY RESIDENTIAL USE...

6) BEARING DATA FOR THIS PLAT IS BASED ON KENTUCKY COORDINATE SYSTEM (NORTH ZONE) NORTH AMERICAN DATUM OF 1983...

7) CONSTRUCTION ACTIVITIES - PREVENTING COMPACTON OF ROOTS OR CONSTRUCTION ACTIVITIES - PREVENTING COMPACTON OF ROOTS...

8) THIS PROPERTY IS NOT LOCATED WITHIN A 100 YEAR FLOOD HAZARD MAP...

9) THIS PLAT IS SUBJECT TO CONDITIONS OF APPROVAL IN DOCKET NUMBER 130900000...

10) THIS PLAT IS SUBJECT TO TREE CANOPY PROTECTION AREAS AS SHOWN ON THE TREE PRESERVATION PLAN FOR THIS SITE UNDER DOCKET NUMBER 130900000...

11) THE FOLLOWING WATER HAS BEEN GRANTED: 15" SAN SEWER & DRAIN PER PLAN BOOK 51, PAGE 41

12) THE FOLLOWING WATER HAS BEEN GRANTED: 15" SAN SEWER & DRAIN PER PLAN BOOK 51, PAGE 41

13) THE FOLLOWING WATER HAS BEEN GRANTED: 15" SAN SEWER & DRAIN PER PLAN BOOK 51, PAGE 41

14) THE FOLLOWING WATER HAS BEEN GRANTED: 15" SAN SEWER & DRAIN PER PLAN BOOK 51, PAGE 41

15) DWELLING ON THE FOLLOWING LOTS SHALL HAVE NO OPENINGS BELOW THE ELEVATION LISTED...

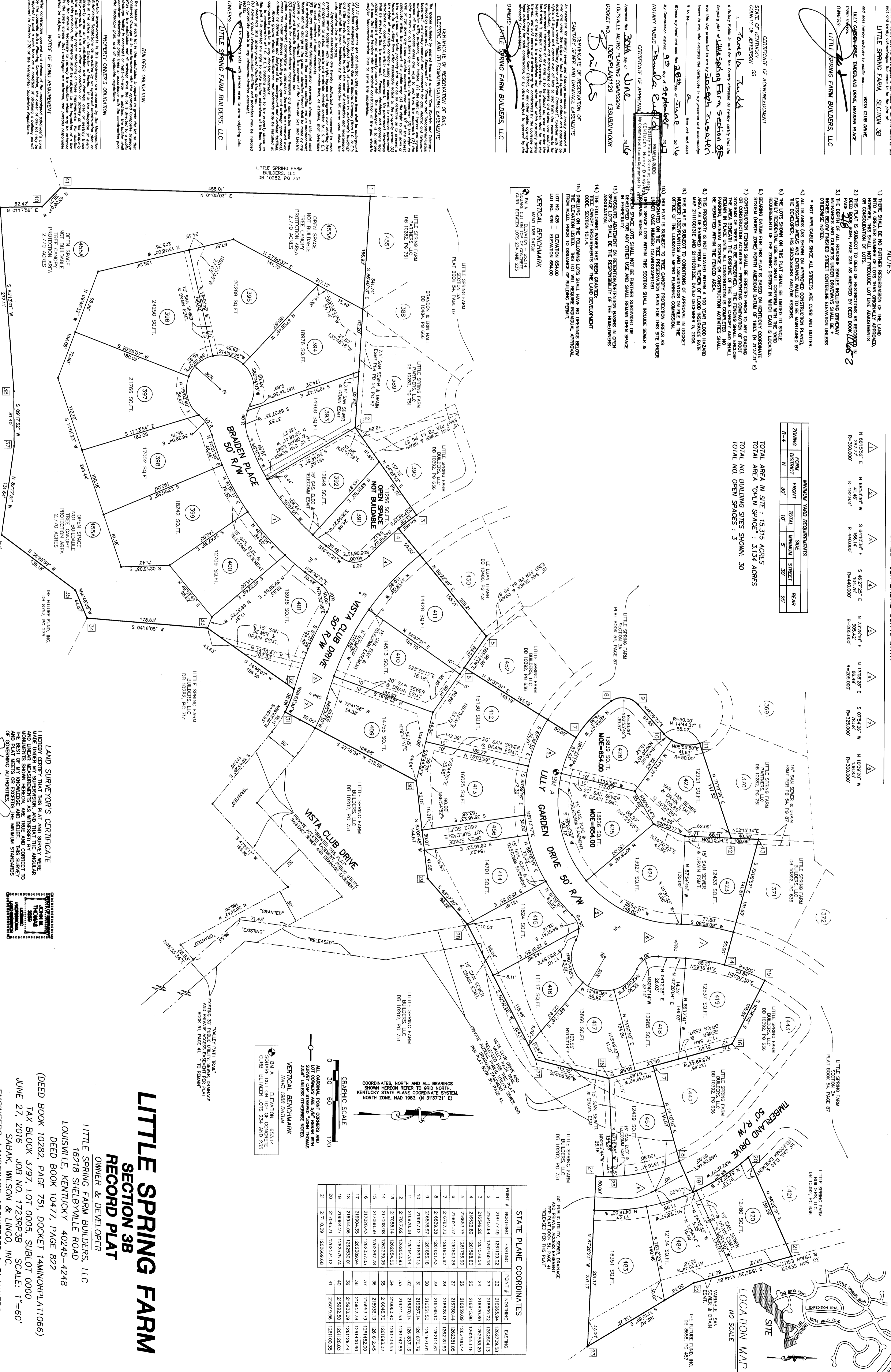
VERTICAL BENCHMARK: BM A, ELEVATION = 633.14

NOTE: ALL CORNERS ARE 5/8" REBAR WITH 3009 VERTICAL CHAINS...

STREET CENTERLINE CURVE DATA

Table with columns: ZONING DISTRICT, FRONT, TOTAL, REAR, MINIMUM YARD REQUIREMENTS. Includes data for R-4, N, S, W, E directions.

TOTAL AREA IN SITE: 15,315 ACRES
TOTAL AREA "OPEN SPACE": 3,134 ACRES
TOTAL NO. OPEN SPACES: 30



STATE PLANE COORDINATES table with columns: POINT #, NORTHING, EASTING. Lists coordinates for points 1 through 41.

GRAPHIC SCALE: 0, 30, 60, 120 feet. Includes a north arrow and vertical benchmark information.

LITTLE SPRING FARM SECTION 3B RECORD PLAT

OWNER & DEVELOPER: LITTLE SPRING FARM BUILDERS, LLC

16218 SHELBYSVILLE ROAD, LOUISVILLE, KENTUCKY 40245-4248

DEED BOOK 10477, PAGE 822

LAND SURVEYOR'S CERTIFICATE: I HEREBY CERTIFY THAT THIS PLAT AND SURVEY WERE MADE UNDER MY SUPERVISION...

DATE: 6-27-16

ENGINEERS, LANDSCAPE ARCHITECTS & PLANNERS: SABAK, WILSON & LINGO, INC.

608 SOUTH THIRD STREET, LOUISVILLE, KENTUCKY 40202

55x64

55x64

6/30/16

7/6/16