

**Bobbie Holsclaw**  
Jefferson County Clerk's Office

As evidenced by the instrument number shown below, this document  
has been recorded as a permanent record in the archives of the  
Jefferson County Clerk's Office.



**INST # 2019016006**

**BATCH # 165138**

JEFFERSON CO, KY FEE \$20.00

PRESENTED ON: 01-22-2019 9 12:06:51 PM

LODGED BY: BARDENWERPER TALBOTT & ROBERTS PLLC

RECORDED: 01-22-2019 12:06:51 PM

BOBBIE HOLSCRAW

CLERK

BY: EVELYN MAYES

RECORDING CLERK

**BK: P 58**

**PG: 41-42**

SHAKES RUN, SECTION 12

OWNERS: SHAKES RUN DEVELOPMENT SECTION 8, LLC

CERTIFICATE OF ACKNOWLEDGMENT

STATE OF KENTUCKY

JAMES L. HIMS

SHAKES RUN, SECTION 12

APPROVED BY: JAMES L. HIMS

DATE: 15th day of MAY 2018

APPROVED BY: JAMES L. HIMS

DATE: 15th day of MAY 2018

APPROVED BY: JAMES L. HIMS

DATE: 15th day of MAY 2018

APPROVED BY: JAMES L. HIMS

DATE: 15th day of MAY 2018

APPROVED BY: JAMES L. HIMS

DATE: 15th day of MAY 2018

APPROVED BY: JAMES L. HIMS

DATE: 15th day of MAY 2018

APPROVED BY: JAMES L. HIMS

DATE: 15th day of MAY 2018

APPROVED BY: JAMES L. HIMS

DATE: 15th day of MAY 2018

APPROVED BY: JAMES L. HIMS

DATE: 15th day of MAY 2018

APPROVED BY: JAMES L. HIMS

DATE: 15th day of MAY 2018

APPROVED BY: JAMES L. HIMS

DATE: 15th day of MAY 2018

APPROVED BY: JAMES L. HIMS

DATE: 15th day of MAY 2018

APPROVED BY: JAMES L. HIMS

DATE: 15th day of MAY 2018

APPROVED BY: JAMES L. HIMS

DATE: 15th day of MAY 2018

APPROVED BY: JAMES L. HIMS

DATE: 15th day of MAY 2018

APPROVED BY: JAMES L. HIMS

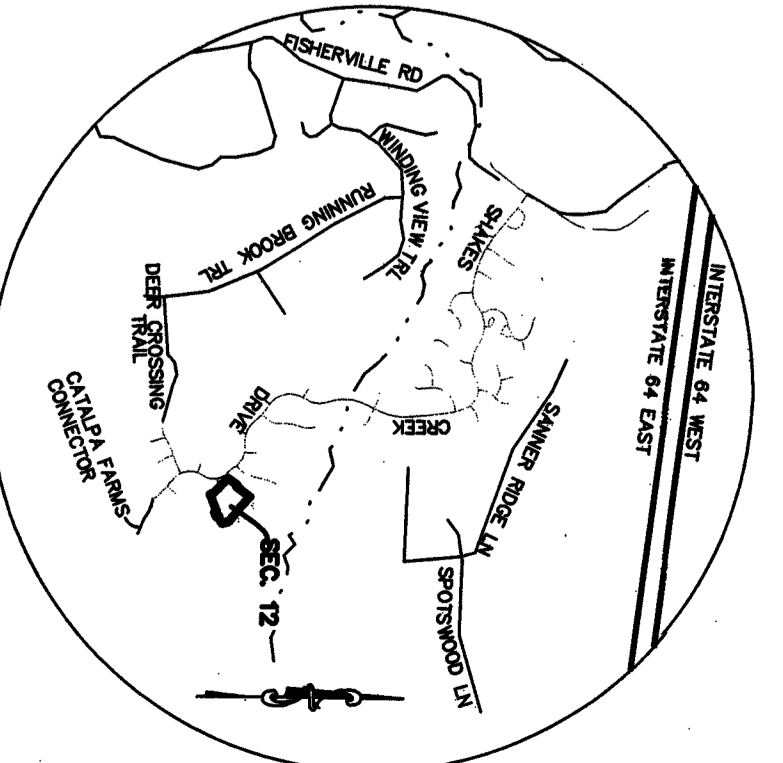
KENTUCKY STATE PLANE COORDINATE SYSTEM, NORTH AMERICAN DATUM 1983

Table with columns: POINT #, NORTHING, EASTING, POINT #, NORTHING, EASTING. Lists 20 points with their coordinates.

CURVE DATA

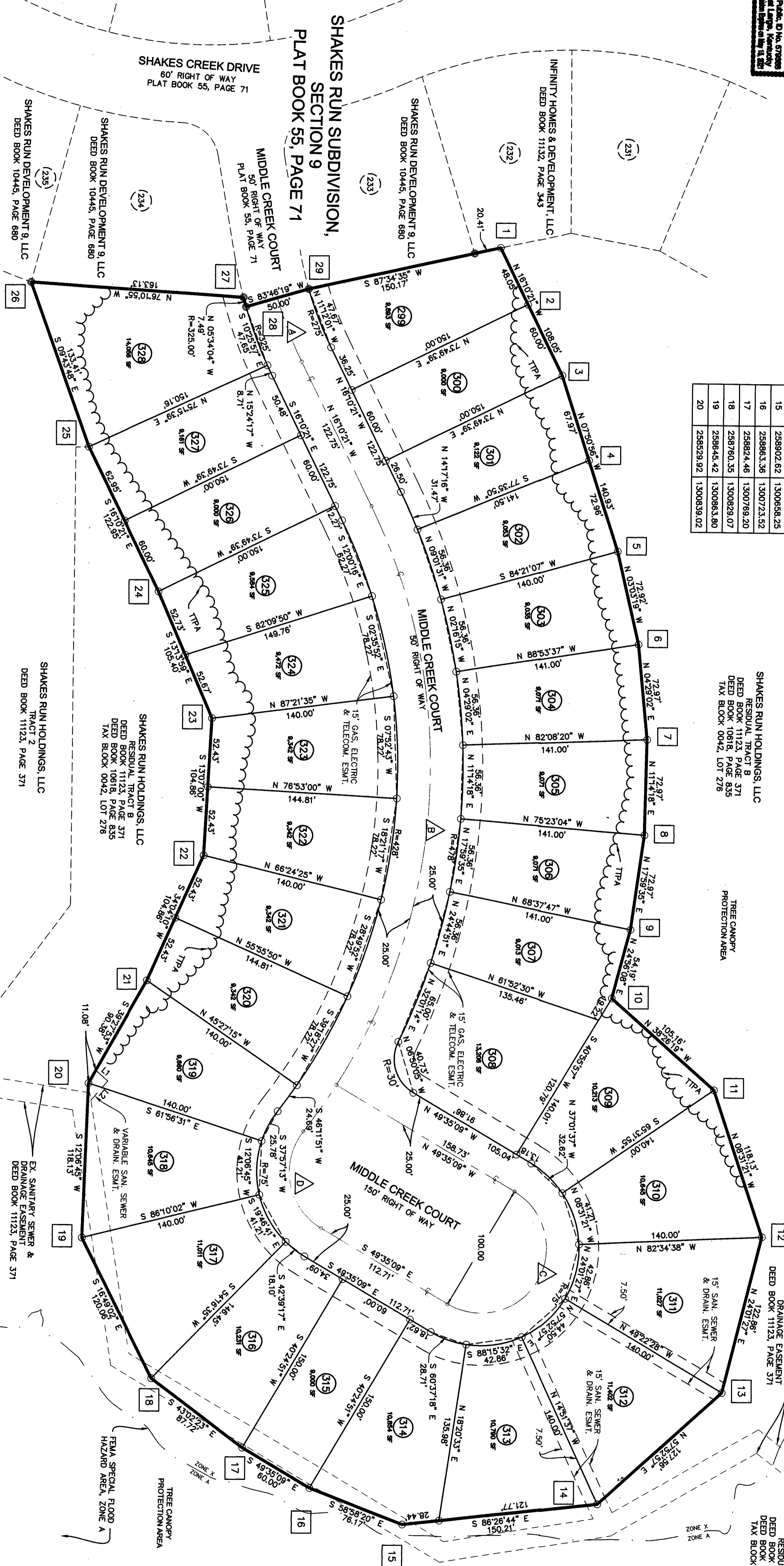
Table with columns: CURVE #, POINT #, NORTHING, EASTING, CURVE DATA. Lists curve data for points 1 through 12.

LOCATION MAP



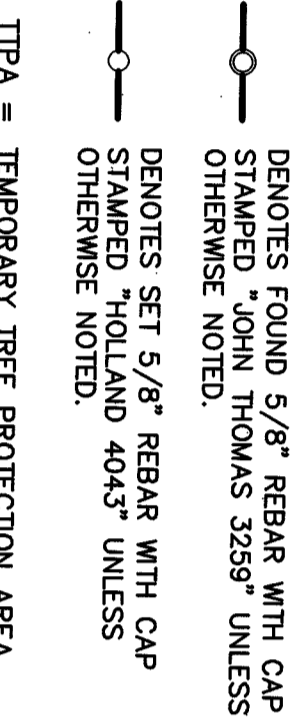
NOTES:

- List of 14 notes detailing site requirements, easements, and construction standards.



SHAKES RUN SUBDIVISION, SECTION 9

Table with columns: FRONT, SIDE, REAR, MINIMUM YARD REQUIREMENTS. Lists yard requirements for different lot sides.



LINE TABLE with columns: LINE #, BEARING, DISTANCE. Lists line data for the site boundaries.

LAND SURVEYOR'S CERTIFICATE

Text block containing the land surveyor's certification and signature.

TOTAL AREA IN SITE: 8.403 ACRES

TOTAL NO. BUILDING SITES: 30

SHAKES RUNS SUBDIVISION

SECTION 12 RECORD PLAT

OWNER & DEVELOPER

SHAKES DEVELOPMENT SECTION 8, LLC

16218 SHELBYVILLE ROAD

LOUISVILLE, KENTUCKY 40245

DEED BOOK 11123, PAGE 371

TAX BLOCK 0042, LOT 0276, SUBLOT 0000

DATE: DECEMBER 3, 2018 JOB NO: 2436-12 SCALE: 1"=50'

SABAK, WILSON & LINGO, INC. ENGINEERS, LANDSCAPE ARCHITECTS & PLANNERS

THE HENRY CLAY 608 S. THIRD STREET LOUISVILLE, KENTUCKY 40202

58 x 40

58 x 40