

# Bobbie Holsclaw

Jefferson County Clerk's Office

As evidenced by the instrument number shown below, this document  
has been recorded as a permanent record in the archives of the  
Jefferson County Clerk's Office.



**INST # 2020157220**

**BATCH # 242488**

**JEFFERSON CO, KY FEE \$50.00**

PRESENTED ON: 08-07-2020 08:21:29 AM

LODGED BY: STEVEN BURCH

RECORDED: 08-07-2020 08:21:29 AM

BOBBIE HOLSCRAW  
CLERK

BY: TERESA HIGGS  
RECORDING CLERK

**BK: P 60**

**PG: 24-25**

CERTIFICATE OF OWNERSHIP AND DEDICATION  
This is to certify that the following is a true and correct copy of the plat and map as approved by the State of Kentucky...

ASIA CLUB DRIVE  
COME VALLEY WAY, CROSSFIRE WAY AND CROSSFIRE PLACE  
OWNERS:  
CLAYTON PROPERTIES GROUP, INC.

CERTIFICATE OF ACKNOWLEDGMENT  
STATE OF KENTUCKY  
COUNTY OF JEFFERSON  
I, Paula Brown, Clerk of the County of Jefferson, do hereby certify that the foregoing plat of LITTLE SPRING FARM SECTION 4C was duly presented to me by Clayton Properties Group, Inc. and that the same is a true and correct copy of the original as shown to me.

CERTIFICATE OF APPROVAL  
Approved by Clayton Properties Group, Inc.  
LOUISVILLE METRO PLANNING COMMISSION  
DOCKET NO. 60-PR-0004

CERTIFICATE OF RESERVATION OF WATER LINE EASEMENT  
SAVANNAH SENIOR AND REMAINING EASEMENTS  
OWNERS:  
CLAYTON PROPERTIES GROUP, INC.

CERTIFICATE OF RESERVATION OF GAS  
ELECTRIC AND TELECOMMUNICATIONS EASEMENTS  
OWNERS:  
CLAYTON PROPERTIES GROUP, INC.

CERTIFICATE OF RESERVATION OF DRAINAGE EASEMENT  
OWNERS:  
CLAYTON PROPERTIES GROUP, INC.

CERTIFICATE OF RESERVATION OF WATER LINE EASEMENT  
SAVANNAH SENIOR AND REMAINING EASEMENTS  
OWNERS:  
CLAYTON PROPERTIES GROUP, INC.

CERTIFICATE OF RESERVATION OF GAS  
ELECTRIC AND TELECOMMUNICATIONS EASEMENTS  
OWNERS:  
CLAYTON PROPERTIES GROUP, INC.

CERTIFICATE OF RESERVATION OF DRAINAGE EASEMENT  
OWNERS:  
CLAYTON PROPERTIES GROUP, INC.

CERTIFICATE OF RESERVATION OF WATER LINE EASEMENT  
SAVANNAH SENIOR AND REMAINING EASEMENTS  
OWNERS:  
CLAYTON PROPERTIES GROUP, INC.

CERTIFICATE OF RESERVATION OF GAS  
ELECTRIC AND TELECOMMUNICATIONS EASEMENTS  
OWNERS:  
CLAYTON PROPERTIES GROUP, INC.

CERTIFICATE OF RESERVATION OF DRAINAGE EASEMENT  
OWNERS:  
CLAYTON PROPERTIES GROUP, INC.

CERTIFICATE OF RESERVATION OF WATER LINE EASEMENT  
SAVANNAH SENIOR AND REMAINING EASEMENTS  
OWNERS:  
CLAYTON PROPERTIES GROUP, INC.

CERTIFICATE OF RESERVATION OF GAS  
ELECTRIC AND TELECOMMUNICATIONS EASEMENTS  
OWNERS:  
CLAYTON PROPERTIES GROUP, INC.

CERTIFICATE OF RESERVATION OF DRAINAGE EASEMENT  
OWNERS:  
CLAYTON PROPERTIES GROUP, INC.

CERTIFICATE OF RESERVATION OF WATER LINE EASEMENT  
SAVANNAH SENIOR AND REMAINING EASEMENTS  
OWNERS:  
CLAYTON PROPERTIES GROUP, INC.

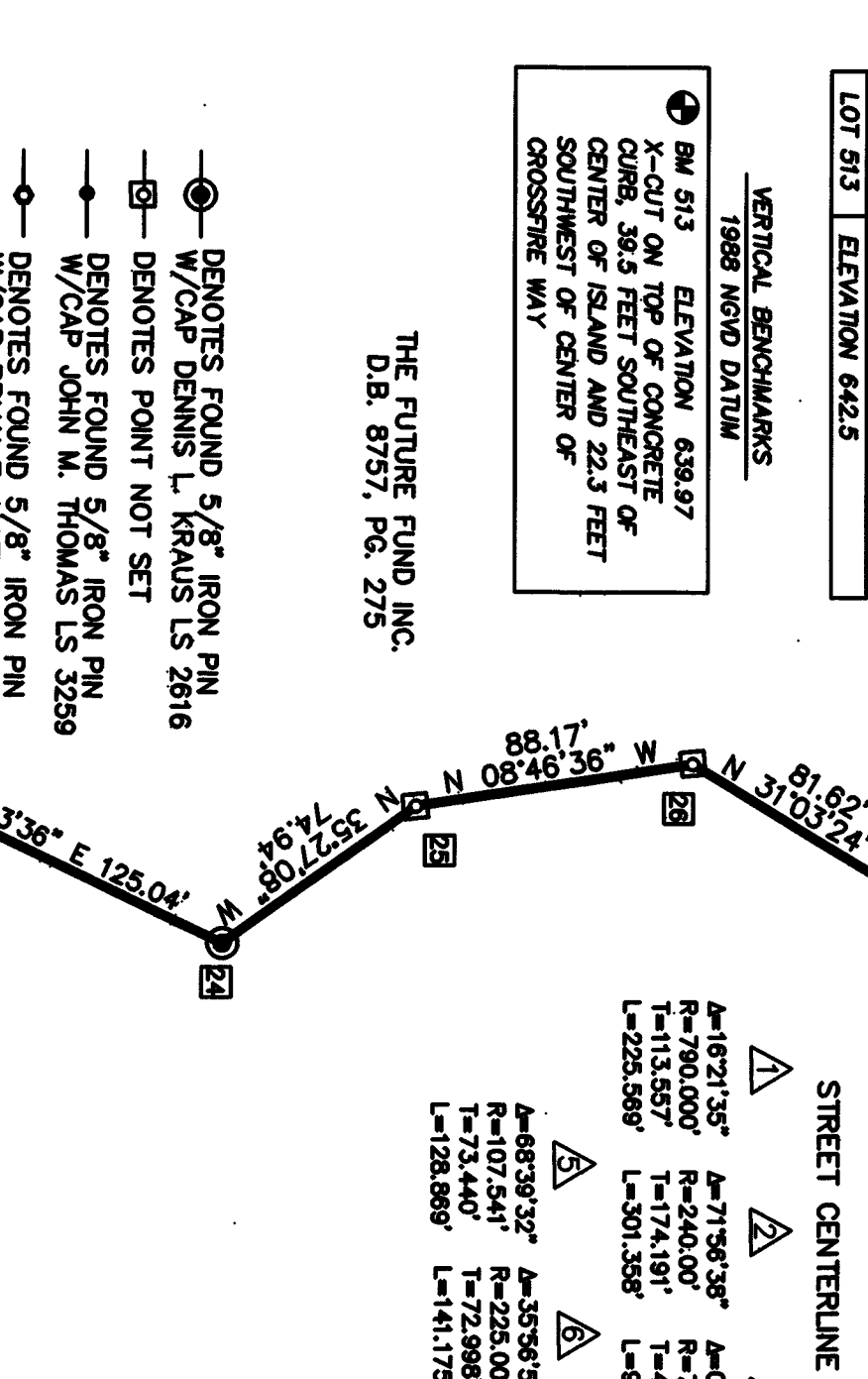
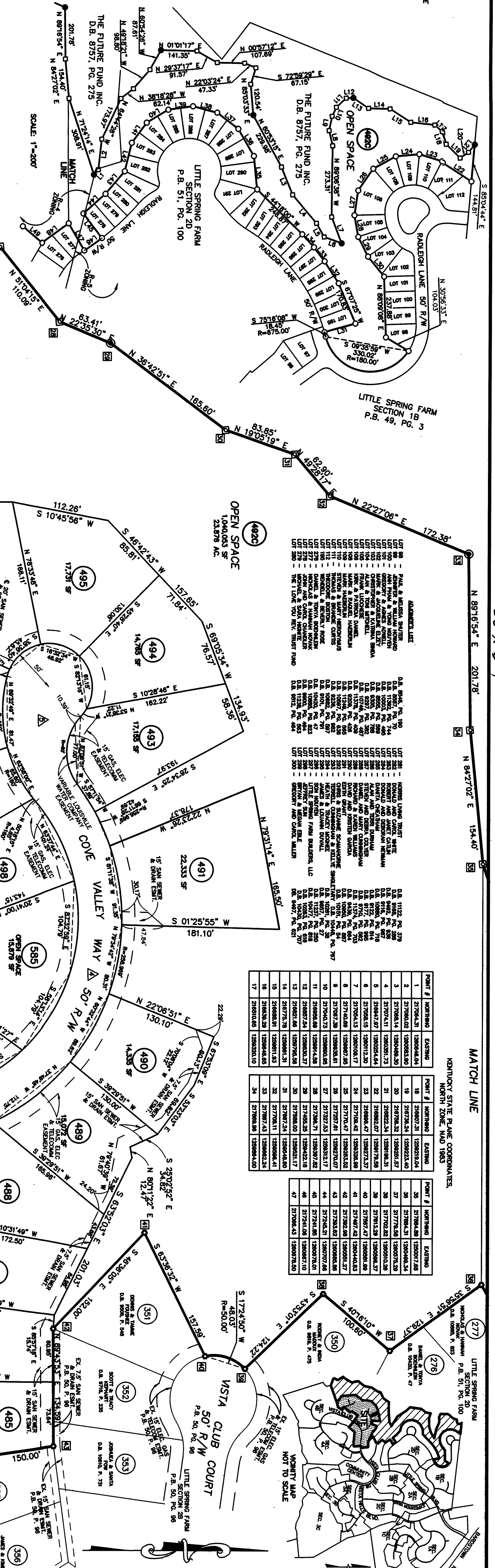


Table with columns: LINE, LINE NUMBER, DISTANCE, BEARING. Lists survey points and distances.

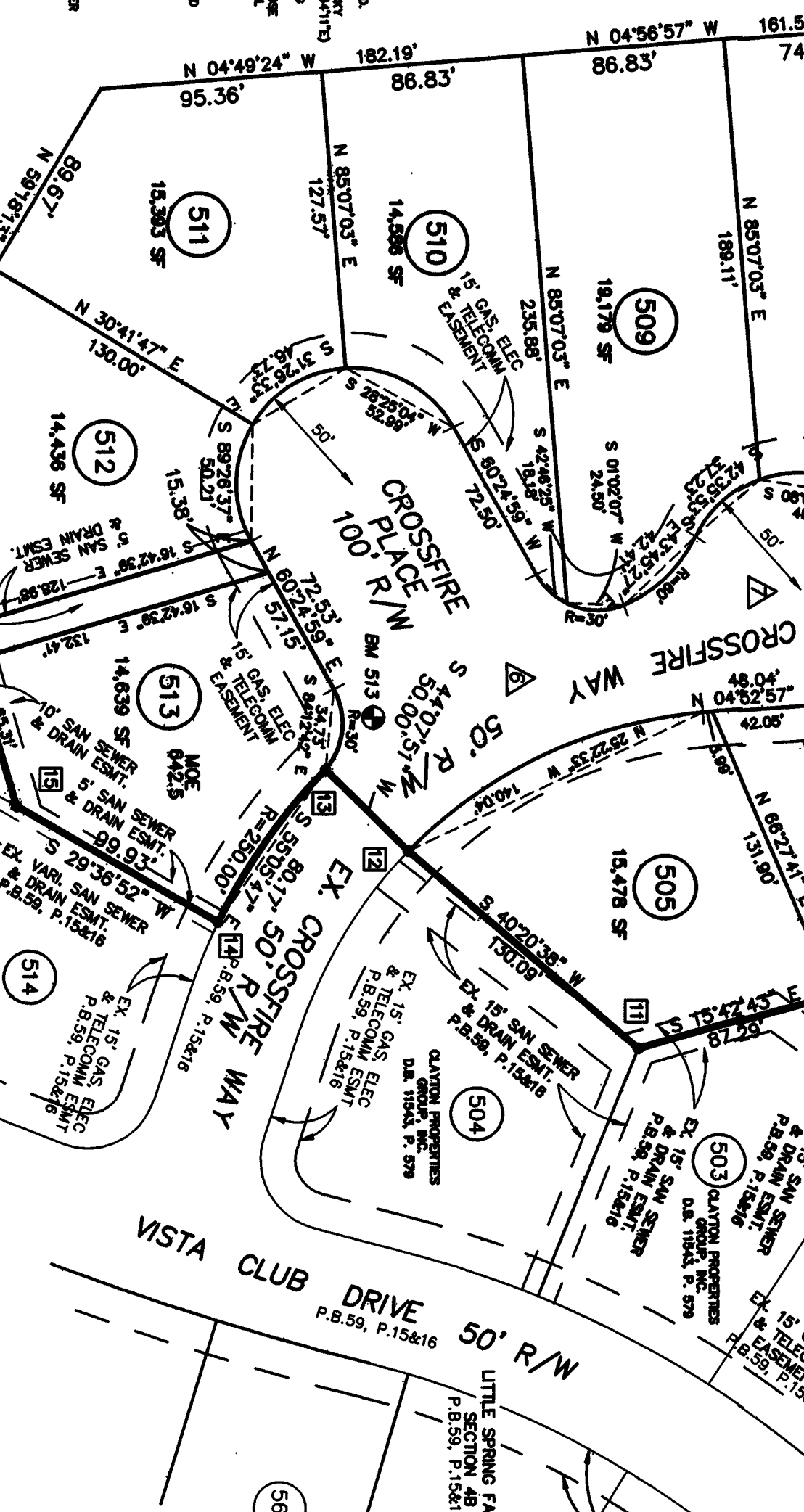


Table with columns: POINT #, NORTHING, EASTING. Lists coordinates for various points on the site.

NOTICE OF BOND REQUIREMENT  
LAND SURVEYOR'S CERTIFICATE  
LITTLE SPRING FARM SECTION 4C RECORD PLAT  
OWNER & DEVELOPER: CLAYTON PROPERTIES GROUP, INC.  
16218 SHELBYVILLE ROAD, LOUISVILLE, KENTUCKY 40245  
CLAYTON PROPERTIES GROUP, INC.  
11400 VISTA CLUB COURT, DEED BOOK 11633, PAGE 431  
TAX BLOCK 3797, LOT 0001, SUBLOT 0000  
JOB NO. 1723P-04 SCALE: 1"=60'  
SABAK, WILSON & LINGO, INC.  
ENGINEERS, LANDSCAPE ARCHITECTS & PLANNERS  
LOUISVILLE, KENTUCKY 40202